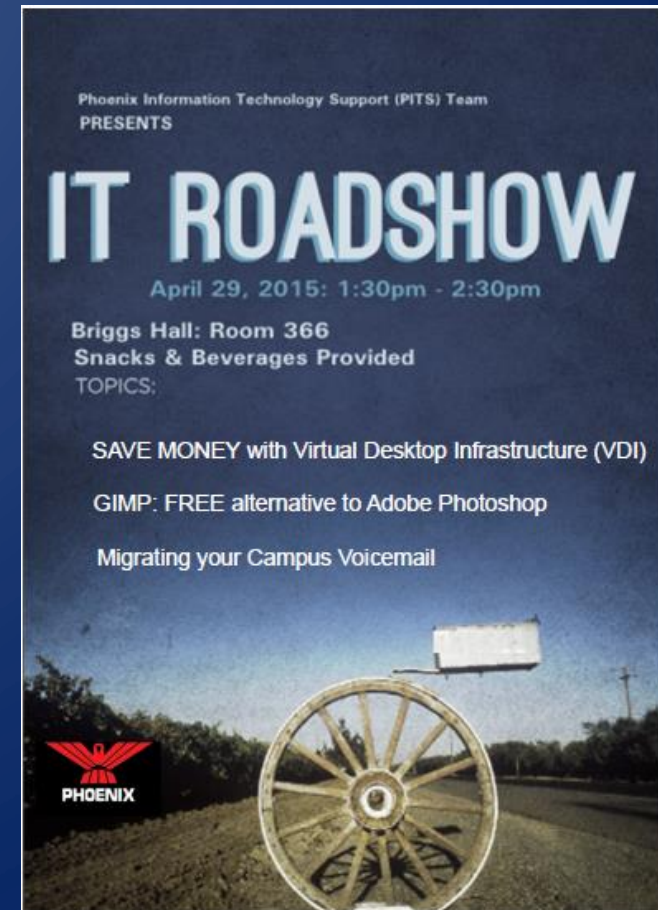


PHOENIX INFORMATION TECHNOLOGY SUPPORT (PITS) TEAM IT ROADSHOW

APRIL 29, 2015: 1:30PM – 2:30PM

BRIGGS HALL: ROOM 366





TOPICS:

- **SAVE MONEY WITH VIRTUAL DESKTOP INFRASTRUCTURE (VDI):**

Alfred Chan & Julio Cardenas

- **GIMP: FREE ALTERNATIVE TO ADOBE PHOTOSHOP**

George Terry

- **MIGRATING YOUR CAMPUS VOICEMAIL:**

Derek Leale

- **QUESTIONS AND DISCUSSION**



SAVE MONEY WITH VIRTUAL DESKTOP INFRASTRUCTURE (VDI)

WHAT DO YOU GET OUT OF VDI?

WHAT KINDS OF VDI TECHNOLOGY DID WE CONSIDER?

WHAT'S HAPPENING WITH VDI ON CAMPUS?



WHAT DO YOU GET OUT OF VDI?

- ABILITY TO SHARE APPLICATION LICENSING
- ABILITY TO SHARE COMPUTING DATA
- PROVIDE A REMOTE COLLABORATIVE ENVIRONMENT FOR RESEARCH
- LOWER COST OF GENERAL COMPUTING EQUIPMENT
- ABILITY ACCESS APPLICATION AND DATA AS LONG YOU HAVE INTERNET CONNECTION & HTML5 BROWSER

(IPAD, SAMSUNG TABLET, ANDROID PHONES, IPHONES, MAC, PC, ETC)

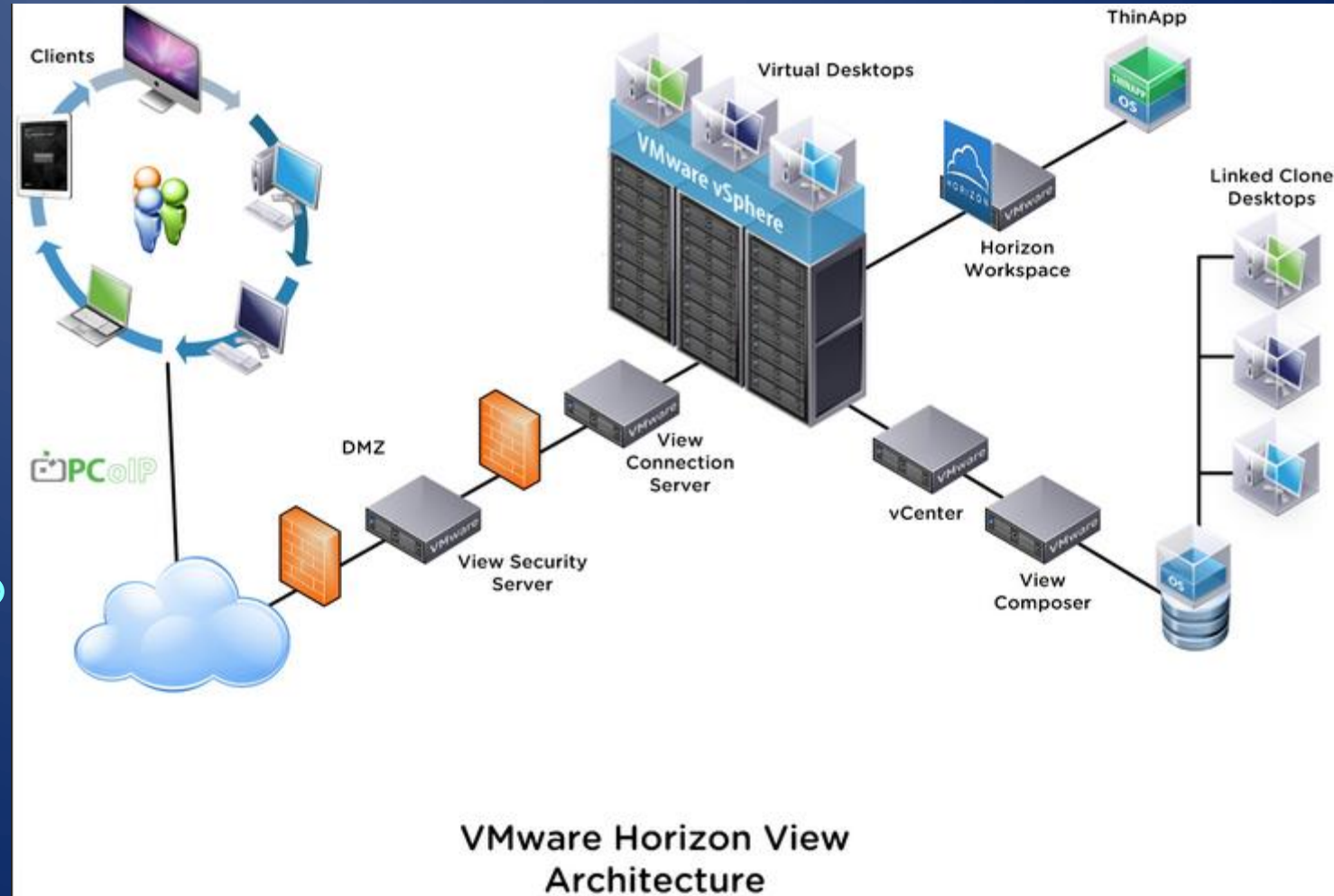


WHAT KINDS OF VDI TECHNOLOGY DID WE CONSIDER?

- VMWARE HORIZON
- CITRIX XENDESKTOP
- ULTEO
- PARALLELS 2X

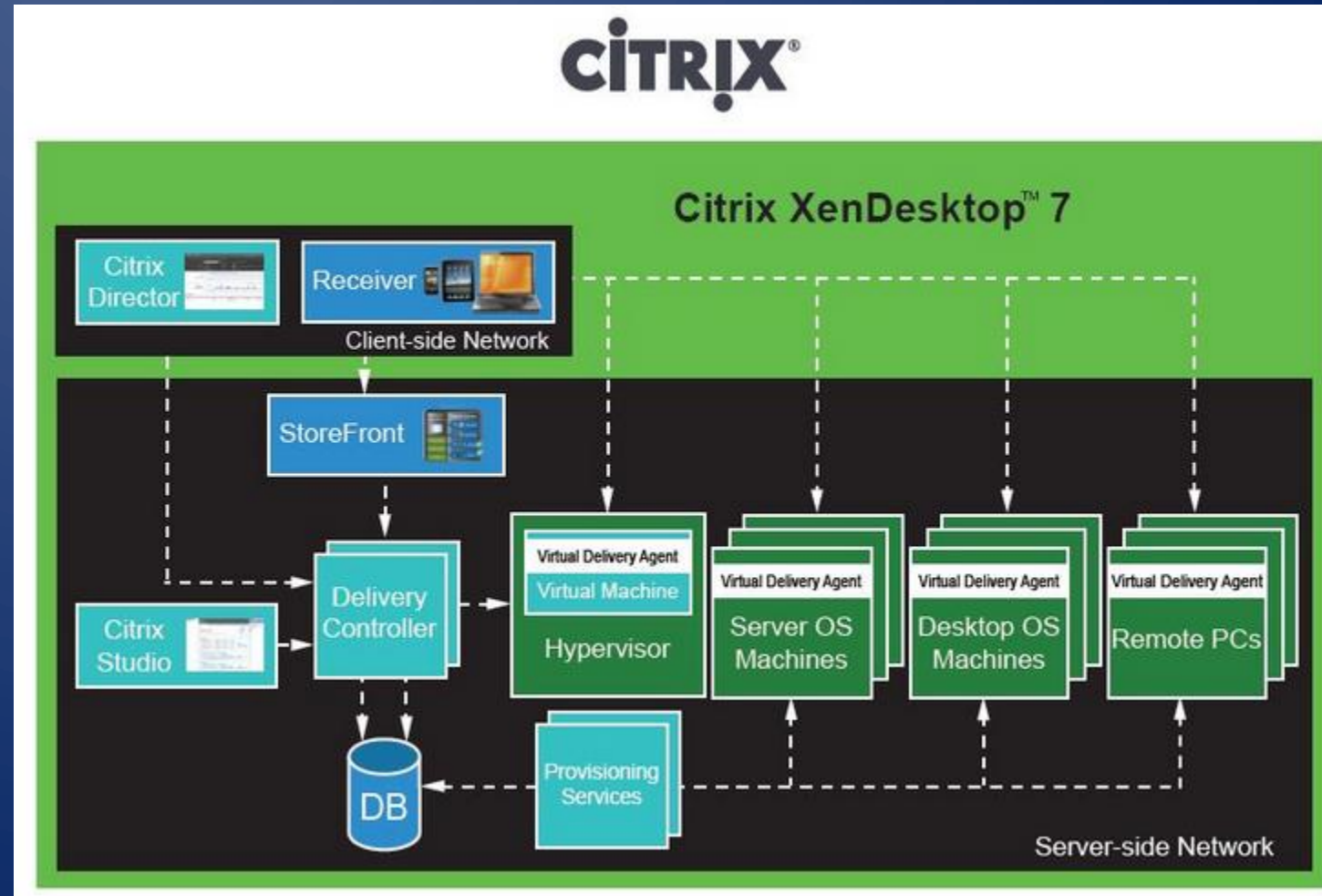
VMWARE HORIZON

- BEST PERFORMANCE
- INCL. PAID SUPPORT
- CAMPUS'S CHOICE
- HIGHEST COST
\$400/LICENSE
- REQUIRES A MORE
COSTLY & COMPLICATED
ARCHITECTURE



CITRIX XENDESKTOP

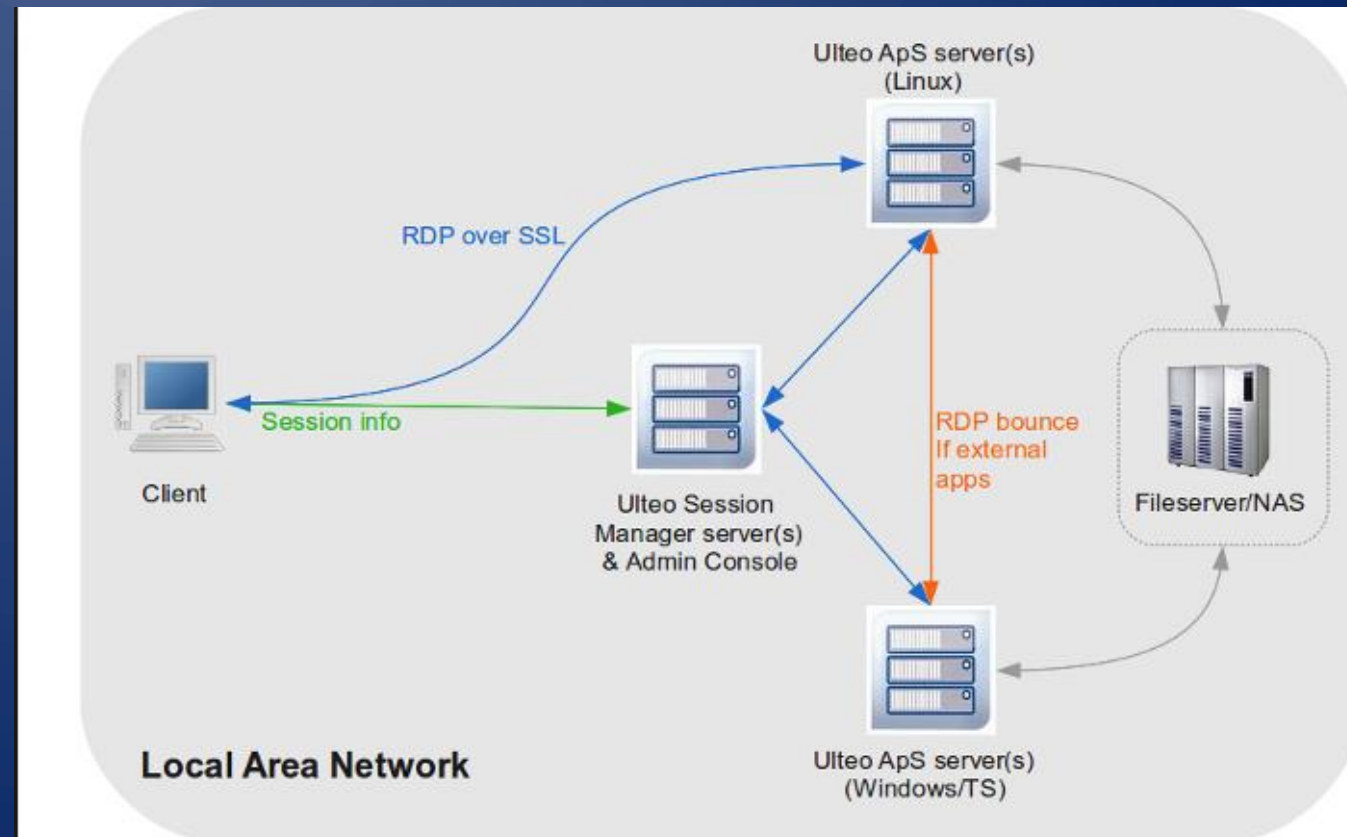
- PERFORMS WELL
- INCL. SUPPORT
- STILL HIGH COST
\$350/LICENSE
- REQUIRES A SIMILAR
COSTLY & COMPLICATED
ARCHITECTURE



ULTEO

- PERFORMS WELL
- FREE OPEN SOURCE
- FAIRLY SIMPLE ARCHITECTURE
- NO FREE SUPPORT
- PAID SUPPORT AVAILABLE

THAT STARTS AT \$3000



PARALLELS 2X

- COMPARABLE PERFORMANCE TO COMPETITORS
- REASONABLE COST: \$75/LICENSE
- FAIRLY SIMPLE ARCHITECTURE
- INCLUDED SUPPORT



REF: [HTTP://WWW.2X.COM/RAS/COMPARISON/](http://www.2x.com/ras/comparison/)



WHAT KINDS OF VDI TECHNOLOGY DID WE CONSIDER?

VMWARE HORIZON \$400 PER CONCURRENT USER LICENSE

CITRIX XENSERVER/XENDESKTOP \$350 PER CONCURRENT USER LICENSE

ULTEO -FREE PER CONCURRENT USER LICENSE WITH NO SUPPORT

PARALLELS 2X -\$75 PER CONCURRENT USER LICENSE

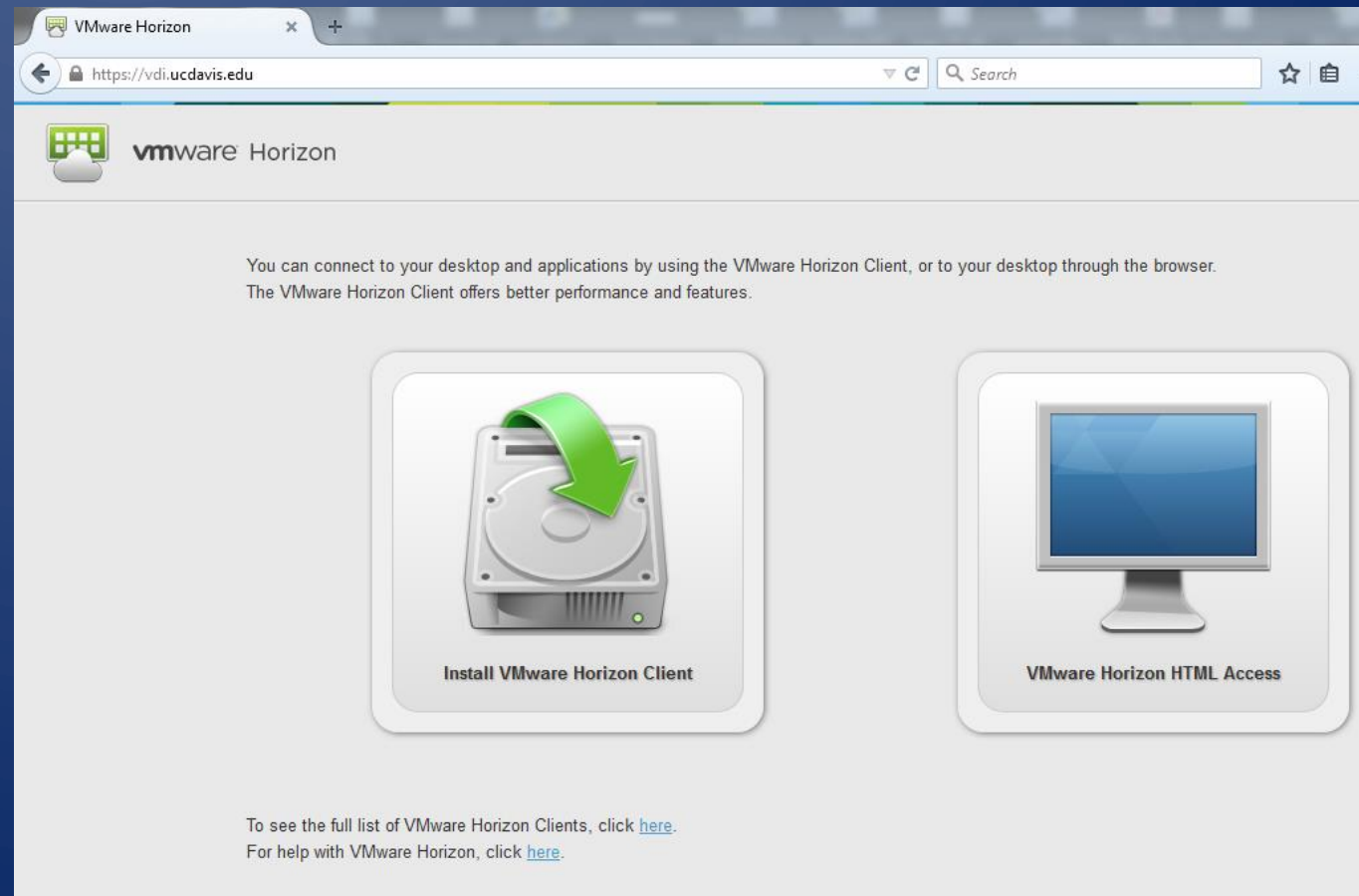
A decorative graphic on the left side of the slide, consisting of a network of light blue lines and small circles, resembling a circuit board or a stylized tree structure.

WHAT'S HAPPENING WITH VDI ON CAMPUS?

FUTURE CAMPUS VIRTUAL LABS

[HTTPS://VDI.UCDAVIS.EDU/](https://vdi.ucdavis.edu/)

- Powered By VMWARE Horizon
- Platform Independent
- Campus Work In Progress
- Unknown Costs
- Unknown Flexibility





IET VIRTUAL LABS

[HTTP://VIRTUALLAB.UCDAVIS.EDU/](http://virtuallab.ucdavis.edu/)

- Free to use for UCD Faculty, Staff and Students (Student Priority)
- Powered by Microsoft Remote Desktop Services
- Limited Connections
- Disconnection after 10mins
- Unavailable 4am - 5:30am
- Not platform independent

IET Virtual Computer Lab

The IET Virtual Computer Lab allows you to remotely logon to PCs in the IET Computer Labs after hours to run specialized software.

Please choose the type of system you need:

- ☐ Adobe CS 6 (Photoshop, Illustrator, InDesign)
- ☐ Mathcad 14
- ☐ MATLAB R2014a
- ☐ Office 2013 (Word, Excel, Powerpoint, Access)
- ☐ Python (Python 2.7, Python 3.3, PyScripter)
- ☐ R 3.1.0 & RStudio
- ☐ SAS 9.4
- ☐ SPSS 22
- ☐ Stata 13
- ☐ Chemistry 130B

Choose Virtual Computer Lab

LIBRARY VIRTUAL LABS

[HTTPS://VDI.LIB.UCDAVIS.EDU/](https://vdi.lib.ucdavis.edu/)

- Powered By VMWARE Horizon
- Platform Independent
- Library Work In Progress
- Unknown Costs
- May provide some Flexibility with subscription



The background is a solid dark blue. In the corners, there are decorative white line art elements resembling circuit boards or neural networks. These elements consist of thin white lines that branch out and terminate in small white circles. The patterns are symmetrical, with similar designs in the top-left, top-right, bottom-left, and bottom-right corners.

JULIO CARDENAS: LIVE DEMO

A stylized graphic of a circuit board or network diagram, rendered in light blue lines and circles, positioned on the left side of the image. It features a central vertical line with numerous horizontal and diagonal branches, each ending in a small circle, resembling a complex data structure or a neural network.

GEORGE TERRY

An abstract graphic on the left side of the image, consisting of a network of light blue lines and small circles, resembling a circuit board or a neural network diagram. The lines are vertical and horizontal, with some diagonal connections, and the circles are placed at various points along these lines.

DEREK LEALE



QUESTIONS & DISCUSSION

LEAVE FEEDBACK AT

[HTTP://PHOENIX.UCDAVIS.EDU/ITROADSHOWS](http://phoenix.ucdavis.edu/itroadshows)